



Cubicle system NiUU®



NiUU® At a glance

KEMMLIT For every demand	2
NiUU Designed by Wolfram Wöhr	4
NiUU Sustainable	5
NiUU K 38 mm thick wooden material elements	6
NiUU F 30 mm thick wooden material elements	7
NiUU Room solutions	8
NiUU Floor-to-ceiling	10
NiUU Grip bars	12
NiUU Door lever or knob options	13
NiUU Hinge and leg construction	14
NiUU Modesty screens	15
NiUU K Planning aid	18
NiUU F Planning aid	20
NiUU Colour concept	22
KEMMLIT Our promise	23

KEMMLIT For every demand

As market leader for washroom cubicles, KEMMLIT offer a variety of high class solutions ranging from cubicles and lockers to entire washrooms. Everything we do is based on a clear commitment to the highest quality regarding products,

our consulting service and installation. What sets us apart is qualified know-how, state-of-the-art manufacturing and innovative design. For these reasons we have received numerous prizes and awards within the last few years.

What can we do for you?

For further information:
www.kemmlit.de/niu
Status 01/2020



reddot award 2016
winner



product
design award
2012



Top-Innovator
2014



Top-Arbeitgeber
2016



kemmlit.de



NiUU Designed by Wolfram Wöhr

Clear lines and the stringent emphasis on verticals defines the cubicle system NiUU by KEMMLIT. Inspired by the timeless style of modern classics, the team surrounding the architect Wolfram Wöhr has developed a convincing product with simple shapes and sophisticated details. The innovative supporting leg construction bestows a floating effect to the system, with added dynamics due to its fine and aspirant lines. Rebated doors with precise aluminium

edges hide the door stop and provide a smooth and elegant appearance, which can be further enhanced by concealed hinges. An extensive selection of design elements offers additional options to further customise the cubicle system and integrate them into the room in a perfect manner. The spectrum includes various colours and surfaces, furniture and special heights such as floor-to-ceiling doors.

NiUU has been awarded for innovative design not only with the worldwide known reddot design award, but also with the iF design award, the innovation award for architecture and building, as well as the Plus X award.



reddot design award
winner 2011



product
design award
2012



PLUS X AWARD
Innovation
High Quality
Design
Functionality

NiUU Sustainable

NiUU meets the demands according to the DGNB and not only contributes to sustainability, but also to your building certification: the German Society for Sustainable Building (registered society) is a certification system for sustainable and economically efficient buildings in Germany.

It serves the impartial description and evaluation of the sustainability of buildings and city districts. It is essential that the DGNB system never assesses single measures but always the overall performance of a building or city district. Furthermore KEMMLIT has been certified according to **DIN EN ISO 14001** and

thereby places emphasis on the area of environmental management. The ISO 14001 norm defines environmental management requirements, which enable a company to improve its environmental performance, fulfil legal and other obligations and reach environment objectives.





NiUU K with special decor "Ferrara Oak". Headrail, furniture and supporting legs made of stainless steel



Stainless steel door lever with indicator



Recessed stainless steel supp. legs



NiUU F in traffic white 9317 and yew rustic 0017

NiUU K 38 mm thick wooden material elements

The cubicle system NiUU K consists of 38 mm thick wooden material elements. The elements are framed with a ABS-lipping and the door stop sides are provided with aluminium edges for protection against forceful handling. Furniture, hinges and connection elements are also made of

satin anodised aluminium and have been specially developed for sanitary areas. Next to 15 standard colours, there are also three wooden decors available. Special colours are available on request. A special highlight of the system is the innovative grip bar in three different

options. As a standard NiUU K is outfitted with solid three-roller edge hinges. As an option the doors can be outfitted with a concealed hinge in order to ensure the smooth surface for outwards opening doors as well.

NiUU F 30 mm thick wooden material elements

The cubicle system NiUU F consists of 30 mm thick wooden material elements. The elements for NiUU F are also framed with a ABS-lipping. The specifically developed KEMMLIT hinges with elongated rollers guarantees long-term and failure-free functionality. They are attached with six screws and cannot be unhinged. The internal stainless steel pin of the three-roller edge hinge can be additionally fitted with a spring to enable self-closing or self-opening.

Integrated door buffers provide a low-noise door close. The KEMMLIT supporting leg construction allows for accurate alignment. The under panel clearance of 150 mm can be adapted to floor inclines. NiUU F also includes 15 colours, as well as three wooden decors within the standard range.



NiUU K floating with recessed legs and headrail, in traffic white 9317



NiUU concealed hinge system



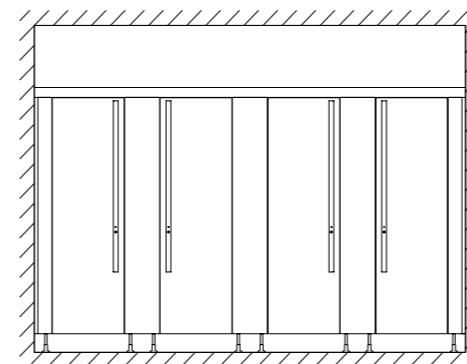
NiUU F support optimised with supp. legs in the partition, in graphite 7808

NiUU Room solutions

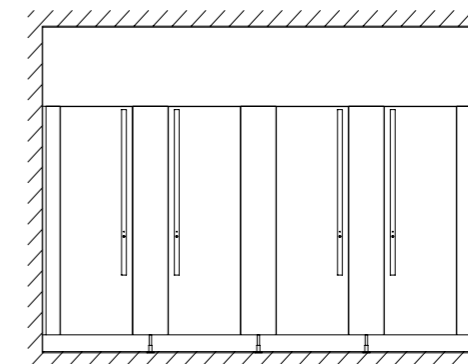
The cubicle system NiUU with the options NiUU K and NiUU F is provided with headrail and supporting legs in the front as the standard version. The cubicle height is 2135 mm. Under panel clearance is 150 mm. The supporting legs are either made of aluminium or stainless steel and are solidly connected to the front elements with a M12-thread.

Support optimised is the innovative solution with supporting legs integrated in the partition. Invisible from the outside, aesthetically pleasing and easy to clean. A filigree option means the headrail can also be recessed. This provides a floating appearance.

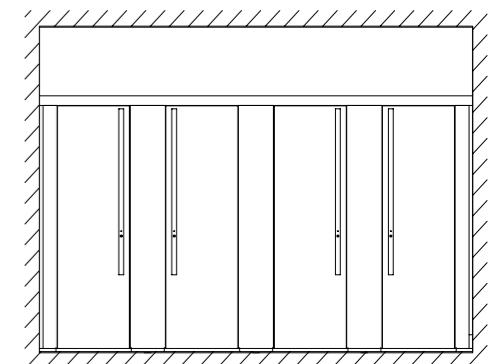
A construction without under panel clearance increases privacy and due to the specially developed floor connection can be adjusted to sloping floors. The aluminium profile is solidly connected to the floor. The system height is 2135 mm from the upper edge of the head rail.



NiUU standard version



NiUU floating construction



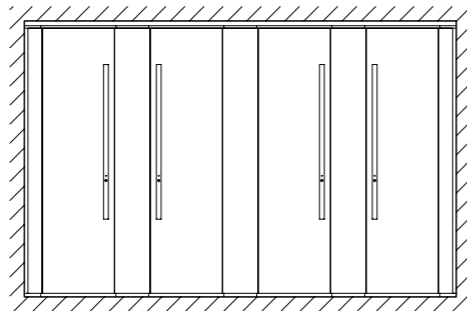
NiUU without under panel clearance



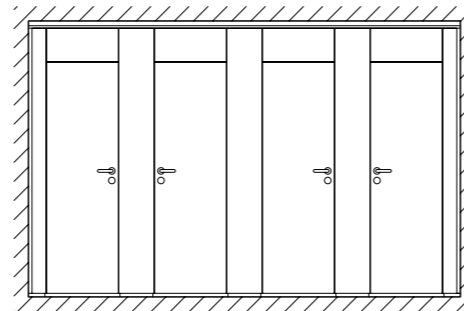
NiUU F without under panel clearance

NiUU Floor-to-ceiling

For floor-to-ceiling construction the front panels, partitions and doors are closed from ceiling to floor. The maximum room height is 2800 mm. NiUU K can be realised with all elements continuously floor-to-ceiling. The doors for NiUU F are 2300 mm high. Smoothly integrated upper panels above the doors provide the closed appearance.



NiUU K floor-to-ceiling



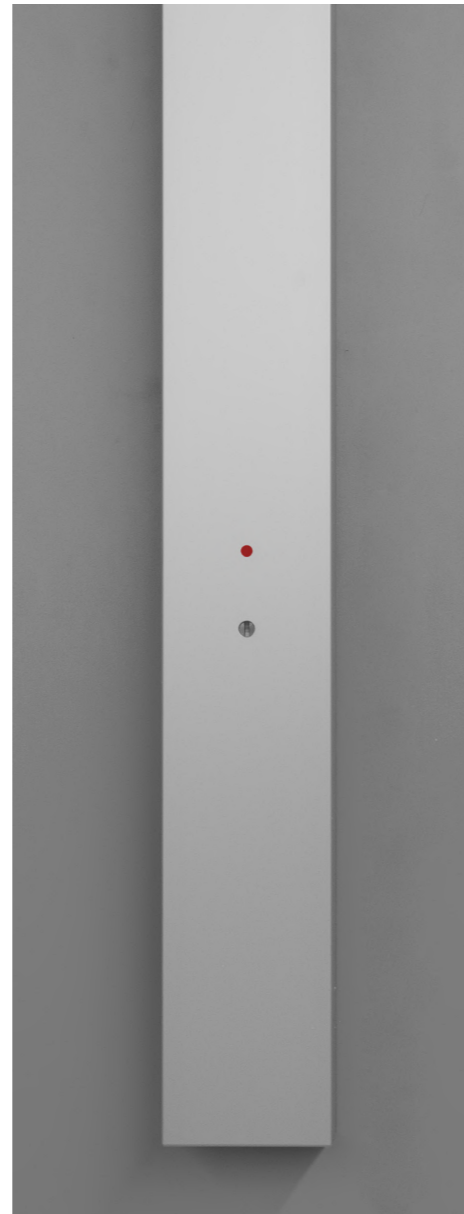
NiUU F floor-to-ceiling with upper panels



NiUU F floor-to-ceiling with upper panels



Grip bar GS 40 with LED indicator



Grip bar GS 90 with LED indicator



Door knob made of aluminium with indicator

NiUU Grip bars

An exclusive alternative to the classical door handles, KEMMLIT offers high class grip bars in three different options: Grip bar GS 25 made of aluminium round shaped with a diameter of 25 mm. GS 25 is available in length 400 mm and 800 mm. The free-/occupied indicator is situated next to the grip bar.

As a second option the grip bar GS 40 made of aluminium is available in three lengths 430 mm, 1165 mm and 1300 mm. The free-/occupied indicator is available either mechanically or with LED.

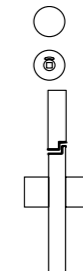
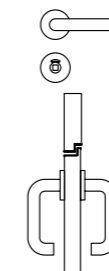
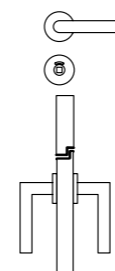
GS 90 is the third option and is shaped in an ageless square design. The grip bar is 90 mm wide and 700 mm long. For GS 90 the indicator is also available either mechanically or with LED.

NiUU Door lever and knob options

The classical solution: L-shaped lever, optionally made of aluminium or stainless steel, with indicator and emergency release made of a metal square.

The safety option: safety door lever in U-shape made of coloured nylon, satin anodised aluminium or stainless steel for self-closing or -opening doors with indicator and emergency release.

Ergonomically shaped: door knob made of nylon, satin anodised aluminium or stainless steel for self-closing or -opening doors with indicator and emergency release.





NiUU aluminium supporting leg with flat cover sleeve



NiUU F finger protection



NiUU special hinge



NiUU modesty screens in traffic white 9217

NiUU Hinge and leg construction

The KEMMLIT three-roller edge hinge is durable, maintenance-free, non-detachable and screwed in place six fold. Depending on the room situation, doors can be realised either self-closing or opening due to a three-roller edge hinge with integrated spring system.

As an option NiUU K offers a concealed special hinge. This hinge is integrated in the door and the front, therefore providing a smooth surfaced appearance on both sides. An invisible magnet ensures that the doors stay closed. The standard supporting leg is adjustable -5/+ 25 mm and provides durable functionality due to its stability.

The standard supporting leg in detail: stainless steel core with M12 thread for stepless height adjustability and impact resistant cover sleeve.

NiUU Modesty screens

NiUU modesty screens, matching the design, material and colour of the cubicle system complete the portfolio and provide excellent solutions for all areas. NiUU modesty screens are manufactured from 30 mm thick wooden material and ABS-lipping. The modesty screen wall connection is accomplished with two holders made of satin anodised aluminium. Stabilising wall inserts should be pre-planned on site.

In addition to the modesty screen 825 x 435 mm, an extended modesty screen with leg, measuring 1475 x 435 mm is available as well. Alternatively, modesty screens in satin-finished 10 mm toughened safety glass with shapely panel holders in stainless steel appearance can be supplied.





	Standard	Optionally for a surcharge
Layout	<ul style="list-style-type: none"> Cubicle system for sanitary facilities, with smooth surfaced appearance made of 38 mm thick wooden material elements Rows of cubicles or single cubicles for various room situations, special solutions available on request 	
Compliance	<ul style="list-style-type: none"> TÜV and GS (tested safety) certified 	
Cubicle design	<ul style="list-style-type: none"> Supporting legs and headrail in the front 	<ul style="list-style-type: none"> Support-optimised cubicles (rows of cubicles only), wall connection with angles Floating (supporting legs and headrail recessed) Without under panel clearance Without under panel clearance, closed floor-to-ceiling up to a maximum height of 2800 mm Anteroom partitions as well as cubicles optionally with profile cylinder (except grip bars)
Single cubicle	<ul style="list-style-type: none"> Supporting legs and headrail in the front, recessed headrail not available 	
Cubicle height	<ul style="list-style-type: none"> 2135 mm 	<ul style="list-style-type: none"> Special heights on request, max. up to 2800 mm For recessed headrail min. 2000 mm, max. 2135 mm
Front panel parts	<ul style="list-style-type: none"> Flexible design, min. pilaster 140 mm width 	
Cubicle depth	<ul style="list-style-type: none"> 1500 mm 	<ul style="list-style-type: none"> Partitions 1601 mm and larger will be divided with shadow gap, additional supporting leg and headrail
Panel and door material	<ul style="list-style-type: none"> Wooden material sheet melamine coated Material thickness 38 mm Partitions 30 mm 	
Edge protection	<ul style="list-style-type: none"> ABS-lipping either coloured white or manhattan 	
Door closing	<ul style="list-style-type: none"> Rebated door closing, with solid aluminium edge, changing door opening (inwards / outwards) within one front possible 	
Door height	<ul style="list-style-type: none"> For cubicle height 2135 mm / 150 mm under panel clearance; door leaf 1939 mm 	<ul style="list-style-type: none"> Up to max. 2800 mm cubicle height (door leaf according to cubicle design)
Door width	<ul style="list-style-type: none"> 570 mm (nominal size) 650 mm (nominal size) 750 mm (nominal size) 980 mm (nominal size) 	<ul style="list-style-type: none"> Special widths available on request!

	Standard	Optionally for a surcharge
Headrail	<ul style="list-style-type: none"> For rows of cubicles or niche cubicles and single cubicles, aluminium profile 45 x 43 mm above the front 	<ul style="list-style-type: none"> For rows of cubicles, aluminium profile 40 x 30 x 3 mm recessed / floating
Ceiling connection		<ul style="list-style-type: none"> max. height 2800 mm, ceiling connection with aluminium profile (in case of suspended ceilings only with solid inserts)
Floor connection and supporting legs	<ul style="list-style-type: none"> Satin anodised aluminium supporting leg with 150 mm under panel clearance 	<ul style="list-style-type: none"> Satin anodised aluminium supporting leg with 80 - 215 mm u.p.c. Stainless steel supporting leg with 80 - 215 mm u.p.c. Aluminium design supporting leg for low u.p.c. 50 - 80 mm Without supporting leg, with floor connection profile and 30 mm ventilation gap underneath the doors Legs glued to floor (min. 80 mm u.p.c.), not available for support-optimised and floating
Wall connection	<ul style="list-style-type: none"> Embracing U-profile, satin anodised aluminium 	<ul style="list-style-type: none"> Shadow gap with satin anodised aluminium
Angular wall connection		<ul style="list-style-type: none"> Embracing U-channel
Angular panel connection		<ul style="list-style-type: none"> Embracing profile
Hinges	<ul style="list-style-type: none"> 3-roller edge hinge made of aluminium 	<ul style="list-style-type: none"> 3-roller spring hinges made of aluminium 3-roller hinge made of stainless steel Concealed special hinge, integrated flush incl. magnet to keep the doors closed
Door lever handle	<ul style="list-style-type: none"> Lever handle made of aluminium L-shaped 	<ul style="list-style-type: none"> Nylon lever handle U-shaped Aluminium lever handle U-shaped Stainless steel lever handle L-shaped Stainless steel lever handle U-shaped Special furniture on request
Door knobs		<ul style="list-style-type: none"> Knobs made of nylon Knobs made of aluminium Knobs made of stainless steel
Locking	<ul style="list-style-type: none"> 2-latch lock 	<ul style="list-style-type: none"> 1-latch lock
Grip bars		<ul style="list-style-type: none"> Grip bar GS 25 available lengths 400 mm and 800 mm Grip bar GS 90 available length 700 mm Grip bar GS 40 available lengths 430 mm, 1165 mm and 1300 mm
Modesty screens	<ul style="list-style-type: none"> Made of 30 mm thick wooden material with ABS-lipping (size 825 mm x 435 mm) 	<ul style="list-style-type: none"> Modesty screen with supporting legs made of 30 mm wooden material with ABS-lipping (size 1475 mm x 435 mm) Satinato modesty screens (toughened safety glass satin-finished)

Subject to technical changes 03/2019



	Standard	Optionally for a surcharge
Layout	<ul style="list-style-type: none"> Cubicle system for sanitary facilities, with smooth surfaced appearance made of 30 mm thick wooden material elements Rows of cubicles or single cubicles for various room situations, special solutions available on request 	
Compliance	<ul style="list-style-type: none"> TÜV and GS (tested safety) certified 	
Cubicle design	<ul style="list-style-type: none"> Supporting legs and headrail in the front 	<ul style="list-style-type: none"> Support-optimised cubicles (rows of cubicles only), wall connection with angles Floating (supporting legs and headrail recessed), wall connection with angles (rows of cubicles only) Without under panel clearance Without under panel clearance, closed floor-to-ceiling up to a maximum room height of 2800 mm Without under panel clearance, closed floor-to-ceiling up to a maximum room height of 2800 mm
Single cubicle	<ul style="list-style-type: none"> Supporting legs and headrail in the front, recessed headrail not available 	
Cubicle height	<ul style="list-style-type: none"> 2135 mm 	<ul style="list-style-type: none"> Special heights on request, max. up to 2800 mm for recessed headrail min. 2000 mm, max. 2135 mm
Front panel parts	<ul style="list-style-type: none"> Flexible design, min. pilaster 140 mm width, joints with H-profile 	
Cubicle depth	<ul style="list-style-type: none"> 1500 mm 	<ul style="list-style-type: none"> Partitions 1601 mm and larger will be divided with an H-profile, additional supporting leg and headrail
Panel and door material	<ul style="list-style-type: none"> Wooden material sheet melamine coated material thickness 30 mm 	
Edge protection	<ul style="list-style-type: none"> ABS-lipping either coloured white or manhattan 	
Door closing	<ul style="list-style-type: none"> Rebated door closing, with solid aluminium edge, changing door opening (inwards/ outwards) within one front possible 	
Door height	<ul style="list-style-type: none"> For cubicle height 2135 mm / 150 mm under panel clearance; door leaf 1939 mm 	<ul style="list-style-type: none"> Up to max. 2300 mm cubicle height in case of floor to ceiling construction with upper panel above the door (door leaf according to cubicle design)
Door width	<ul style="list-style-type: none"> 570 mm (nominal size) 650 mm (nominal size) 750 mm (nominal size) 980 mm (nominal size) 	<ul style="list-style-type: none"> Special width available on request!

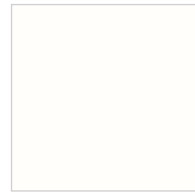
	Standard	Optionally for a surcharge
Headrail	<ul style="list-style-type: none"> For rows of cubicles and single cubicles, aluminium profile 45 x 43 mm above the front 	<ul style="list-style-type: none"> For rows of cubicles, aluminium profile 40 x 30 x 3 mm recessed / floating
Ceiling connection		<ul style="list-style-type: none"> max. height 2800 mm, ceiling connection with aluminium profile (in case of suspended ceilings only with solid inserts)
Floor connection and supporting legs	<ul style="list-style-type: none"> Satin anodised aluminium supporting leg with 150 mm under panel clearance 	<ul style="list-style-type: none"> Satin anodised aluminium supporting leg with 80 - 215 mm u.p.c. Stainless steel supporting leg with 80 - 215 mm u.p.c. Aluminium design supporting leg for low u.p.c. 50 - 80 mm Without supporting leg, with floor connection profile and 30 mm ventilation gap underneath the doors Legs glued to floor (min. 80 mm u.p.c.), not available for support-optimised and floating
Wall connection	<ul style="list-style-type: none"> Embracing U-profile, satin anodised aluminium 	<ul style="list-style-type: none"> Shadow gap with satin anodised aluminium
Angular wall connection		<ul style="list-style-type: none"> Embracing U-channel
Angular panel connection		<ul style="list-style-type: none"> Embracing profile
Hinges	<ul style="list-style-type: none"> 3-roller edge hinge made of aluminium 	<ul style="list-style-type: none"> 3-roller spring hinges made of aluminium 3-roller hinge made of stainless steel
Finger protection		<ul style="list-style-type: none"> Aluminium safety profile on the hinge side
Door lever handle	<ul style="list-style-type: none"> Lever handle made of aluminium L-shaped 	<ul style="list-style-type: none"> Nylon lever handle U-shaped Aluminium lever handle U-shaped Stainless steel lever handle L-shaped Stainless steel lever handle U-shaped Special furniture on request
Door knobs		<ul style="list-style-type: none"> Knobs made of nylon Knobs made of aluminium Knobs made of stainless steel
Locking	<ul style="list-style-type: none"> 2-latch lock 	<ul style="list-style-type: none"> 1-latch lock
Grip bars		<ul style="list-style-type: none"> Grip bar GS 25 available lengths 400 mm and 800 mm Grip bar GS 90 available length 700 mm Grip bar GS 40 available lengths 430 mm, 1165 mm, 1300 mm
Modesty screens	<ul style="list-style-type: none"> Made of 30 mm thick wooden material with ABS-lipping (size 825 mm x 435 mm) 	<ul style="list-style-type: none"> Modesty screen with supporting legs made of 30 mm wooden material with ABS-lipping (size 1475 mm x 435 mm) Satinato modesty screens (toughened safety glass satin-finished)

Subject to technical changes 03/2019

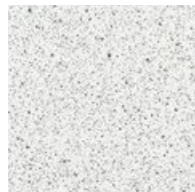
NiUU Colour concept

The available colours are **perfectly** matched to KEMMLIT cubicle systems and other KEMMLIT products, the colour combinations are nearly boundless. The attractive wood decors are **exclusive** to NiUU and provide a special comfortable atmosphere. Special colours are available upon request.

Panels and doors:



Traffic white **9317**
similar to NCS S 0502-G50Y



Granite white **9317P**



Light grey **7208**
similar to NCS S 2500-N



Quartz grey **7708**
similar to NCS S 5000-N



Graphite **7808**
similar to NCS S 7502-B



Cappuccino **1117**
similar to NCS S 3010-Y60R



Burano brown **8617**
similar to NCS S 6010-Y30R



Corn yellow **1708**
similar to NCS S 1070-Y10R



Orange **2717**
similar to NCS S 0570-Y40R



Tornado red **3508**
similar to NCS S 0580-Y90R



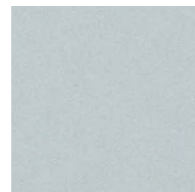
Garnet red **3708**
similar to NCS S 3060-R



Pacific blue **5715**
similar to NCS S 2060-R90B



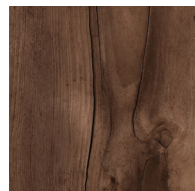
Lagoon blue **5408**
similar to NCS S 1030-R90B



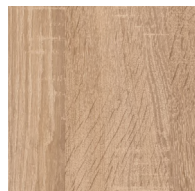
Silver **7408**



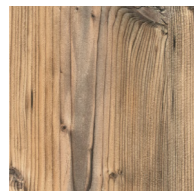
Lemon green **6715**
similar to NCS S 1060-G60Y



Yew rustic **0017**¹

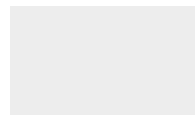


Oak natural **0117**¹

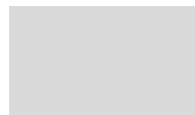


Spruce rustic **0217**¹

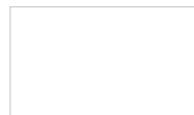
Profiles, hinges, furniture, legs and accessories:



Satin anodised **08**
similar to E6/ EV1



Stainless steel **12**¹



White **02**³
similar to RAL 9016



Manhattan **05**³
similar to NCS 2801-Y36R



Anthracite **03**³
similar to RAL 7043

Colour concept
valid from 07/2017

¹ For a surcharge

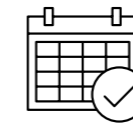
² Head rail, hinges, supporting legs and accessories

³ Furniture and accessories only

⁴ ABS-lipping only available in White 02 and Manhattan 05

Please note that the colours shown may slightly differ from the original colour due to typographic reasons. We would gladly advise you personally.

KEMMLIT Our promise



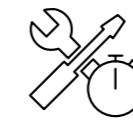
ON-TIME INSTALLATION

98% of all requested delivery
dates can be fulfilled.



FASTEST PRODUCTION & INSTALLATION

Prompt and on-schedule
production and installation.



IMMEDIATE REPAIR

Immediate repair
when you need it.



HIGHEST PRODUCT QUALITY

Premium components and material warrant
long lasting products made in Germany.



WE ARE IN YOUR VICINITY

Individual consulting service by
professional sales representatives.



KEMMLIT-Bauelemente GmbH | Maltschachstraße 37 | D-72144 Dusslingen
Tel.: +49 (0) 7072 /1 31-0 | info@kemmlit.de | kemmlit.de